



NEW

Ask us about EHC Essentials – now offering Rollers for all your elevator and escalator needs!

Products & Services





Making The Grade

- >>> First Canadian Place - Toronto, Canada
- >>> Scotia Plaza - Toronto, Canada
- >>> Toronto Transit - Ontario, Canada
- >>> Exchange Square - Hong Kong, China
- >>> Guangdong International Plaza - Guangzhou, China
- >>> Junefield Plaza - Beijing, China
- >>> No. 1 Yaohan Nextage Shopping Center - Shanghai, China
- >>> Shanghai Light Pearl Light Railway Line - Shanghai, China
- >>> London Underground - London, England
- >>> Euro Disney - Paris, France
- >>> Chubu International Airport - Nagoya, Japan
- >>> Ebisu Garden Place - Tokyo, Japan
- >>> Incheon International Airport - Incheon, Korea
- >>> Singapore Mass Transit - Singapore, Malaysia
- >>> Schiphol Airport - Amsterdam, Netherlands
- >>> Kremlin - Moscow, Russia
- >>> Atlanta Underground - Georgia, USA
- >>> CNN Center - Atlanta, Georgia, USA
- >>> Denver International Airport - Colorado, USA
- >>> Pentagon - Washington D.C., USA

EHC – transporting the escalator industry through new, innovative products.

Launched in 1977 by President and CEO, Ron Ball, EHC is a privately owned Canadian company with more than 20 service locations around the world. All EHC manufacturing facilities are ISO9001: 2000 certified.

EHC makes the most durable handrail on the market and can supply to any location in the world with a factory prepared product. EHC has handrails for every make of escalator unit, and is approved by, and supplies to, every major escalator manufacturer. With over 180 handrail specifications, EHC is the handrail design and manufacturing expert.

EHC's Quick Service Depots are an integral part of a commitment to provide the highest level of handrail technology and support services available worldwide. These depots are launching points for handrail replacement and field services when you need them. With Quick Service Depots strategically positioned on three continents, EHC is your local service expert.

To meet customer production and lead-time objectives, EHC relies on its world class Enterprise Resource Planning (ERP) system. EHC's ERP system increases efficiency, improves service, and reduces costs through controlled and accurate planning.

EHC's escalator expertise is unparalleled, releasing more new products, services, and product enhancements to the market than any other handrail supplier.

It is EHC's commitment to escalator safety and engineering excellence that led to the development and release of EHC's D-Flector Safety Brush, a gentle reminder to passengers to avoid dangerous side-step entrapments.

For as long as the world uses escalators and moving walks, EHC will continue to engineer products to improve them.





Geared Towards Strength

- >> So tough, this handrail will provide trouble free operation on the most severe reverse bend drive systems.
- >> TufFlex is a patented handrail design built to withstand heavy duty wear and tear.
- >> TufFlex is easier to splice on site than competitor products.
- >> TufFlex remains dimensionally stable, avoiding costly maintenance.

TufFlex is more dimensionally stable than any other rubber handrail on the market.

■ WITHSTANDS ENVIRONMENTAL STRESSES

TufFlex's rubber cover is able to withstand environmental exposure without cracking, while looking and feeling good. It's flexible enough to bend through the drive wheel, yet durable enough to withstand the pressure of the drive rollers. EHC's TufFlex provides the ultimate level of protection against the environment compared to any other black rubber handrail and has an exceptionally high resistance to ozone.

■ DIMENSIONAL STABILITY

TufFlex's inner construction preserves the dimensions of the handrail profile through its ability to maintain its lip strength. If other handrail lips shrink, the handrail will run hot,

create excessive dust, and wear out prematurely. If the handrail lips grow, the handrail will come off the guide and create a gap where fingers or clothes can get caught. What is revolutionary about EHC's patented inner construction is that it is extremely rigid across the handrail profile while maintaining flexibility along the handrail length. No other handrail manufacturer boasts a comparable inner construction design or performance.

■ DEPENDABLE

The stretch inhibitor keeps TufFlex from growing or shrinking in length. If competitors' handrails grow in length the result is handrail slippage. If the handrail shrinks, tension increases and components are driven harder resulting in dust, heat, and excessive handrail wear.

■ SUITABLE FOR INDOOR AND OUTDOOR APPLICATIONS

EHC offers both natural and synthetic slider materials to match any handrail application. Slider ensures the handrail runs freely along the escalator handrail guides while providing a "gripable" surface for the drive. The slider must be flexible enough to endure the drive's bends without cracking in the lip area, soft enough to run quietly and cleanly, yet durable enough to avoid deteriorating on the guide. On outdoor units, the slider ply must also be able to withstand exposure to the elements.





innovative handrail technology that conveys, protects & informs

NT is manufactured using a **thermoplastic polymer, not rubber** like conventional handrails. As a result, EHC now offers ACCENT – new NT handrail choices.

NT In Action

AIRPORTS

- >> Aruba
- >> Brussels, Belgium
- >> Bermuda
- >> Calgary - Alberta, Canada
- >> Vancouver - British Columbia, Canada
- >> Winnipeg - Manitoba, Canada
- >> Fukuoka - Japan
- >> New Tokyo International - Narita, Japan
- >> Sapporo Chitose - Japan
- >> Puerto Rico
- >> Changi International - Singapore
- >> Carolina - West Virginia, USA
- >> Continental - Texas, USA
- >> Eppley Airfield - Nebraska, USA
- >> JFK - New York, USA
- >> John Wayne - California, USA
- >> LAX - California, USA
- >> Memphis International - Tennessee, USA

SUBWAY SYSTEMS

- >> Guangzhou Subway Line 2 - China
- >> Munich Underground - Germany
- >> Japan Rail West - Japan
- >> Yurikamome Line - Japan
- >> Monaco Train Station
- >> Pusan City Subway System - South Korea
- >> Seoul City Subway System - South Korea
- >> NY City Transit - New York, USA

■ IT'S TOUGH

- Tough outer cover withstands damage from vandalism.
- Runs with very little slippage.
- Approved by global escalator manufacturers.
- Available with an optional antimicrobial additive that protects against bacteria throughout the life of the handrail.

■ IT LOOKS GREAT

- Sleek, shiny surface won't trap dirt or grease.
- Easy to clean using any non abrasive cleaner.
- No polishing required.
- Colours stay vibrant. They won't dull or get dirty like rubber.
- Easy to refurbish.
- Custom colours can be matched to any colour chip.

- All handrails shipped with a peel away protective film covering the top and sides of NT's mirror-like surface.

■ IT'S REVOLUTIONARY

- Because NT is made of a strong thermoplastic polymer, it requires fewer handrail components.
- Handrail failures like delamination, dusting and lip cracking are avoided.
- Field splices have the same properties and strength as factory splices.
- Essentially clear by nature, adding lustrous, bright colours is a simple process. Or leave it clear and see the handrail's inner components!
- Excellent indoor and outdoor performance.

Look for new ACCENT products coming soon from EHC!



Draka EHC

A Brand of Prysmian Group

Colour Handrails

EHC **accent** ColourRail

EHC can match any colour and produce rich vibrant colours. ACCENT colours won't grow dull or get dirty like conventional rubber handrails.

Do You Dream In Colour?

>> EHC is the only handrail manufacturer that can match any colour chip or create custom colours including white, hot pink and orange, and any other colour from your imagination.

>> EHC offers the widest range of handrail colours available within a competitive time frame.

>> EHC is the leading colour handrail manufacturer.

In addition to our seven stocked standard colours, EHC is the only handrail manufacturer that offers an unlimited selection of custom colours:

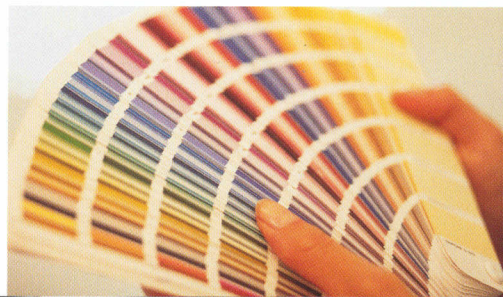
Indoors or out, EHC's colour handrails brighten up any application. Imagine being able to custom match any colour to suit the escalator surroundings. More than ever, building owners worldwide are pushing the limits beyond plain black handrails, and EHC colour handrails are their first choice.

ACCENT coloured handrails are easy to clean and stay glossy and vibrant for the life of

the handrail.

Glossy and tough, EHC colour handrails are available for most escalators and moving walks.

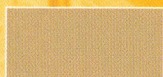
Isn't it time you started dreaming in colour?



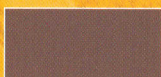
STANDARD COLOURS:



RED



BEIGE



BROWN



GREY



BLUE



GREEN



CHARCOAL

Colours may not be exactly as shown. Contact EHC for a colour selector. Custom colours available upon request.



AMRail - Handrails with antimicrobial protection **give passengers a sense of comfort** knowing the handrails they hold are cleaner because they inhibit the growth of microbes.

Some Things are Worth Protecting

- >> Studies show that consumers are concerned about the day-to-day exposure to bacteria and mould.
- >> 71% of consumers said products with antimicrobial protection are worth paying a little more for.
- >> AMRail's antimicrobial protection is permanent and lasts for the life of the handrail.
- >> EHC's antimicrobial protection is effective, durable and has a long history of safe use.
- >> AMRail handrails are easier to clean and stay cleaner between routine cleanings.

CUSTOMER CONCERNS

Handrails are important for escalator passenger safety, as holding the handrail is one of the best ways to defend against accidental falls.

Yet studies have shown that traditional rubber handrails are a common surface for bacteria. In December 2003, a New York City newspaper¹ featured a story about surfaces in the NYC transit system, and among the surfaces they swabbed were rubber escalator handrails in which they found significant amounts of bacteria.

In addition, the University of Arizona studied 800 surfaces and found that escalator handrails were among the top eight dirtiest public surfaces² including:

1. Public telephones
2. Public rest-room surfaces
3. Counter pens
4. Chair armrests
5. Elevator buttons
6. Escalator handrails
7. Shopping cart handrails
8. Grocery store refrigerator handles

ANTIMICROBIAL PROTECTION

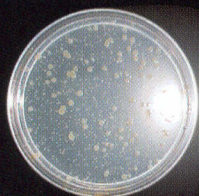
EHC has selected an antimicrobial agent that is safe, effective and permanent for the life of the handrail. Antimicrobial solutions are found in a broad array of household items such as towels, shower curtains, cutting boards, bed linens, dish cloths, clothing, paint, caulking, carpet, hot tubs, garden hoses and computer keyboards.

Antimicrobial protection inhibits the growth of bacteria that can cause product deterioration. The continuous antimicrobial cleaning action provides an added level of protection that keeps EHC handrails cleaner between cleanings.

1 <http://www.nydailynews.com/>

2 <http://www.bluesuitmom.com/health/family/dirtyplaces.html>

Proof Is In The Petri

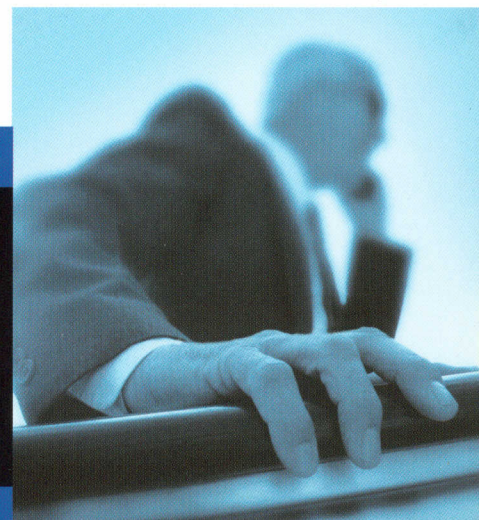


Petri dish without antimicrobial



Petri dish with antimicrobial

Why EHC chooses NT with antimicrobial protection





EHC's D-FLECTOR Safety Brush is suited to a wide range of escalators and moving walks, while meeting global escalator safety code requirements. Reduce the risk of side-step entrapments with D-Flector.

Making The Grade

- >> BCE Place - Toronto, Ontario, Canada
- >> Calgary Airport - Alberta, Canada
- >> CN Tower - Toronto, Ontario, Canada
- >> Shenzhen Subway System - Guangdong Province, China
- >> Sony Center Berlin - Berlin, Germany
- >> Amtrak - New York City, New York, USA
- >> Anaheim Convention Centre - California, USA
- >> Baltimore Convention Centre - Maryland, USA
- >> CNN Centre - Atlanta, Georgia, USA
- >> Dallas/Fort Worth Airport - Texas, USA
- >> Disneyland Hotel - California, USA
- >> Fox Plaza - Los Angeles, California, USA
- >> MARTA Subway - Atlanta, Georgia, USA
- >> Oriole Park - Baltimore, Maryland, USA
- >> San Jose Airport - California, USA
- >> Showboat and Harrah's Casinos - Atlantic City, New Jersey, USA

No wonder EHC's D-Flector is making waves. D-Flector installs in less than half the time of other deflector devices because of its revolutionary flexible brush spine. This flexible spine also allows for easy removal for regular maintenance of the escalator.

EHC has profiles to fit a wide range of escalator models – no on-site bending required. D-Flector's small profile ensures a sleek, unobtrusive appearance on the widest range of escalators and moving walks.

D-Flector is available in Black or Clear (silver) and meets escalator safety code requirements around the world including A17 and EN115.

■ WHAT IS A SIDE-STEP ENTRAPMENT?

A side-step entrapment occurs when limbs or clothing gets caught in the gap between the edge of an escalator and the side wall adjacent to the steps, known as the balustrade skirt. The majority of victims of escalator entrapments are children.

Escalator safety code changes around the world require the installation of deflector devices in order to reduce the risk of side-step entrapments.

D-Flector safety brushes are gentle yet effective reminders to passengers to move away from the sides of the escalator steps.

■ D-FLECTOR COMPONENTS

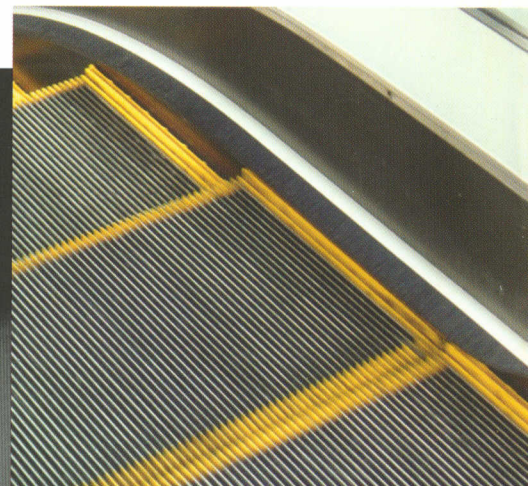
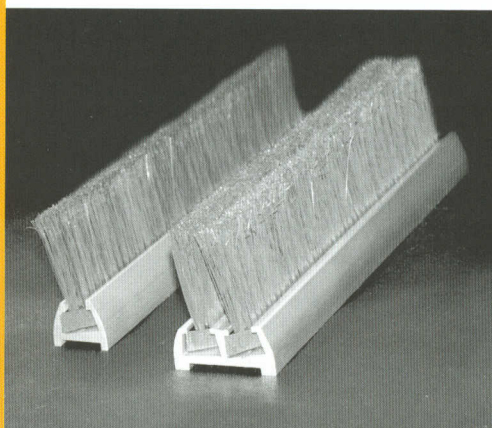
Brush Section - an innovative non-metallic brush slides easily into the brush holder. Easy removal and insertion of the brush section improves the ease of maintenance.

Brush Holder - a highly resilient aluminum profile. The anodized finish is clear or black.

End Caps - durable, black plastic design secured by a tamper proof screw and alignment tab.

Alignment Insert - bridges section ends to help ensure perfect alignment. Insert is slotted to aid installation.

All D-Flector safety brushes ship with a toolkit and step-by-step installation guide.





EHC manufactures rollers for all escalator and elevator makes and models, and has full custom manufacturing capability. Whatever you need, we've got it.

Since 1977, EHC has been supplying the lift industry with high quality products and services all over the world. TufFlex and NT handrails, safety brushes, and now you can rely on EHC for all of your escalator and elevator roller needs.

EHC rollers combine optimum running properties with a long operating life due to their high wear and tear resistance. EHC rollers are constructed with the highest quality bearings to ensure optimum noise and vibration levels.

EHC manufactures rollers for all escalator and

elevator makes and models, and has full custom manufacturing capability. Whatever you need, we've got it.

EHC rollers will outperform and last longer than other rollers. Contact EHC for a complete list of roller part numbers.

You know your units best, and sometimes, one size does not fit all. If you need a custom roller, call us and speak to one of our experts who can help develop a specific roller to your individual needs.

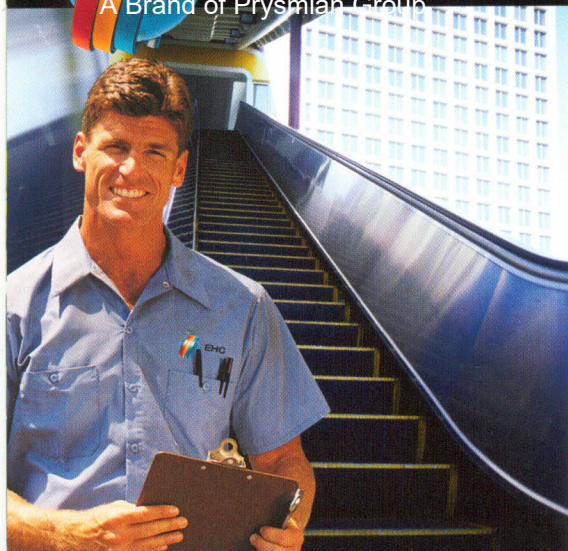
Want to resurface your existing rollers? We can do that too.

EHC Rollers Are a Great Fit:

- >> American Crescent
- >> Armor
- >> Canto
- >> Cemco
- >> Curtis
- >> Dover
- >> Elevator Concepts
- >> Elpro
- >> Elsco
- >> Esco
- >> Fujitec
- >> GAL
- >> General
- >> Haughton-Peele
- >> Hitachi
- >> Hollister - Whitney
- >> Humphries International
- >> KONE
- >> Minnesota
- >> Mitsubishi
- >> Montgomery
- >> National
- >> Northern
- >> Otis
- >> Payne
- >> Schindler
- >> Schumacher
- >> Seaberg
- >> Serge
- >> Staley
- >> Suzhou Jiang Nan
- >> Turnbull
- >> Vertisys
- >> Watson
- >> Westinghouse



NEW
Ask us about our total customer solution packages (handrails, safety brushes, rollers)



Nobody Benefits When A Unit Shuts Down

- >> EHC can field splice one handrail in less than five hours, two in less than eight! Quick turnaround means less unit downtime.
- >> All splices come with an EHC warranty guaranteeing factory quality in the field.
- >> EHC offers the largest global service network in the world. We're there when and where you need us.

EHC's **Handrail Service Experts** provide you with the highest level of handrail support services that saves you downtime and money.

■ WHY USE FIELD SPLICING?

EHC's Service Technicians undergo extensive training over several months before completing splices on their own. And they only perform splices and repairs, giving technicians unprecedented handrail experience and skills.

When performed by properly equipped and trained personnel, field splicing can offer tremendous cost savings over endless installation in the following ways:

- Eliminates the need to disassemble and reassemble the escalator or moving walkway.
- Significantly reduces the labor hours and unit downtimes required to change one or two handrails.
- While present on the jobsite, our Service Technicians can provide factory recommended suggestions for maximum handrail life.

- On some new construction units, it is difficult to accurately predict the length of the handrail needed. In these cases, the best solution is to overestimate the length and have the handrail spliced to fit at the jobsite.

■ EHC QUICKSPlice™

The QuicksplICE™ process splices two cured QuicksplICE™ handrails together. The QuicksplICE™ takes a mere four hours to complete and is more cosmetically sound than competitive splices. The QuicksplICE™ process is possible due to the development of a highly engineered EHC handrail specifically designed to be spliced after it is cured.



Strategically Located Where You Need Us

- » Contact EHC for information on all of our products – from coloured handrails and escalator safety brushes to field service work.
- » With more than 20 service locations, EHC can meet your needs anywhere!
- » EHC has the most manufacturing facilities in the industry.
- » EHC has Quick Service Depots located on three continents, giving you access to Field Service Experts locally.
- » EHC's distributors and licensees make handrail products and services globally accessible to you.
- » Spanning the globe, EHC can provide you with a factory prepared handrail no matter where you are.

WESTERN REGION

North, South and Central America

■ EHC CORPORATE HEAD OFFICE

1287 Boundary Road, Oshawa,
Ontario, Canada L1J 6Z7
Tel: (905) 432-3200
Fax: (905) 432-2906
Toll Free: 1-800-490-7915 (USA & Canada)
www.ehc-global.com
Email: wr-sales@ehc-global.com

■ USA

Escalator Handrail USA, Inc
909 West 76th St.
Davenport, Iowa 52806
USA

■ VENEZUELA

Repascen, C.A.
Avda Francisco de Miranda, Centro Plaza,
Torre A-Piso 12, Oficina C, Urb. Los Palos Grandes
Caracas 1060, Venezuela
Tel: [58] 212 283 8724
Fax: [58] 212 284 4487
Email: repascen@cantv.net

■ EHC (BARBADOS) INC.

Suite 2A
First Floor Alpha Building
Dayrell's Court Business Center
Dayrell's Road
Christ Church, Barbados

EASTERN REGION

Asia and Australia

■ EHC ESCALATOR HANDRAIL (SHANGHAI) CO., LTD.

215 Ma Lu Industrial Park,
No. 58 Chan Bo Rd.
Ma Lu County, Jiading,
Shanghai, 201801, China
Tel: +86 21 69153031
Fax: +86 21 69153231
Email: er-sales@ehc-global.com

■ EHC JAPAN K.K.

1-2F, Sunlife Higashikata Bldg.
432-1 Higashikata-cho, Tsuzuki-ku
Yokohama 224-0045 Japan
Tel: +81 45 470 4136
Fax: +81 45 470 4312
Email: ehc-japan@ehc-global.com

CENTRAL REGION

Europe, Africa, and the Middle East

■ ESCALATOR HANDRAIL GmbH

Peter-Debye-Str. 1
52499 Baesweiler, Germany
Tel: +49 (0)2401 91 60 11
Fax: +49 (0)2401 91 60 10
Email: cr-sales@ehc-global.com

■ ENGLAND

quickFIT Ltd.
68A High Street
Stony Stratford, Milton Keynes
MK11 1 AQ
Tel / Fax: +44 (0) 1908 28 24 56
Email: mike.veithen@quickfit-global.com

■ SWEDEN

PRIMO GUM AB
Industrigatan 12
619 33 Trosa, Sweden
Tel: +46 (0)156 190 05
Fax: +46 (0)156 160 25
Email: support@primogum.se

■ FRANCE

A.C.M.
Z.I.-8, Rue Nicephore Niepce
45700 Villemandeur, France
Tel: +33(0)2 38 93 91 83
Fax: +33(0)2 38 89 11 05
Email: cr-sales@ehc-global.com

■ ITALY

C.I.BI. GOMMA 2 S.R.L.
Viale delle Industrie, 21
20040 Busnago (MI)
Tel: +39 039 6 09 58 07
Fax: +39 039 6 09 52 83
Email: info@cibigomma2.it

■ TURKEY

LÖHER ASANSÖR
A.O.S.B. 10002 Sokak No:19 35620
Çigli - Izmir - Turkey
Tel: +90 0 232 376 71 25
Fax: +90 0 232 376 71 27
Email: info@loher.com.tr

■ SOUTH AFRICA

DAKON cc
62 3rd Street
LINDEN
2195
South Africa
Tel: +27 11 888-4459
Fax: +27 11782-2397
Email: dakoncc@iafrica.com